

# Colonial New England The Dwelling House



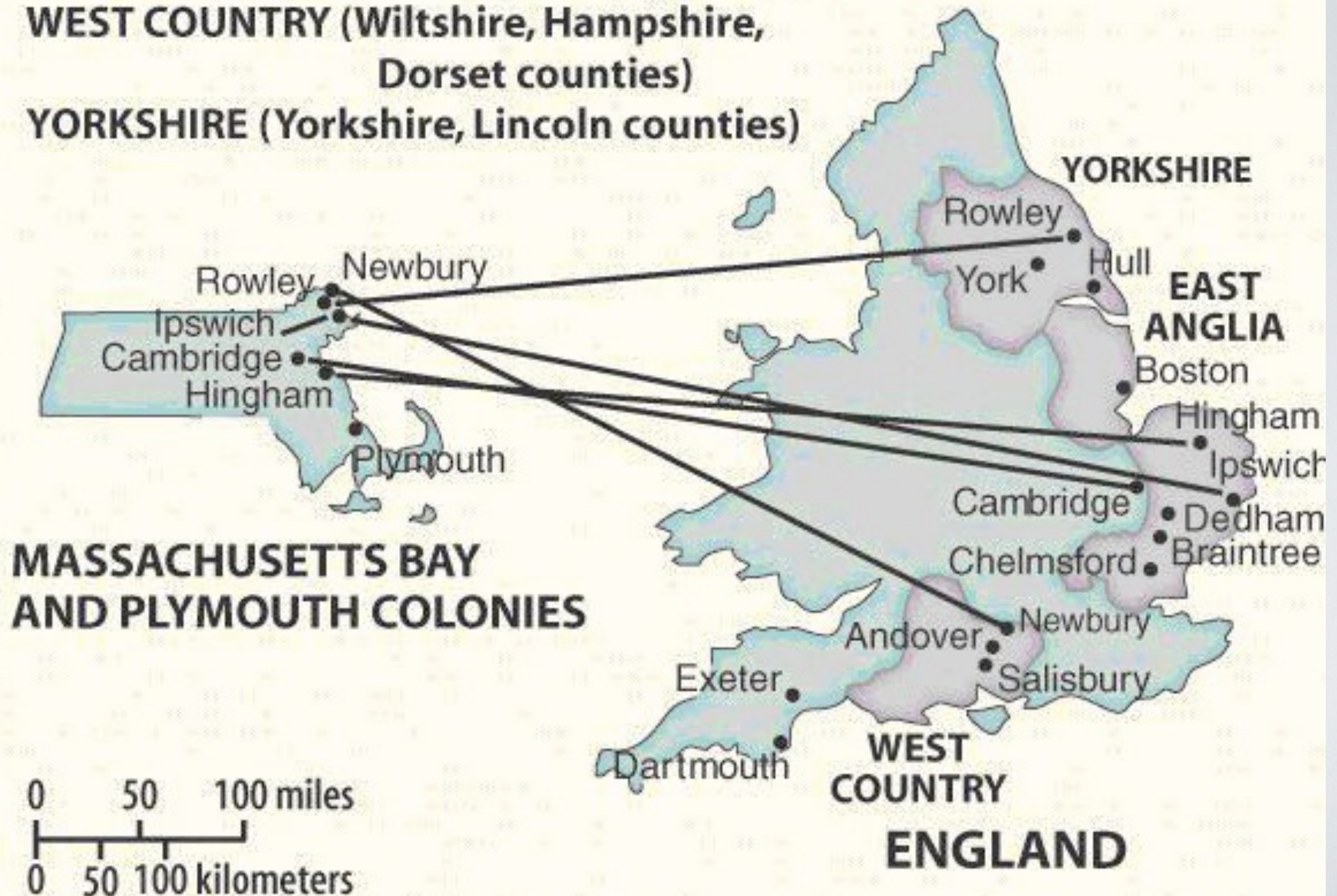


# ORIGINS OF MASSACHUSETTS PURITANS

**EAST ANGLIA** (Norfolk, Suffolk, Essex,  
Hartford counties)

**WEST COUNTRY** (Wiltshire, Hampshire,  
Dorset counties)

**YORKSHIRE** (Yorkshire, Lincoln counties)





# Medieval Hall House, Yeoman Farmer, Sussex, England 1400 - 1500

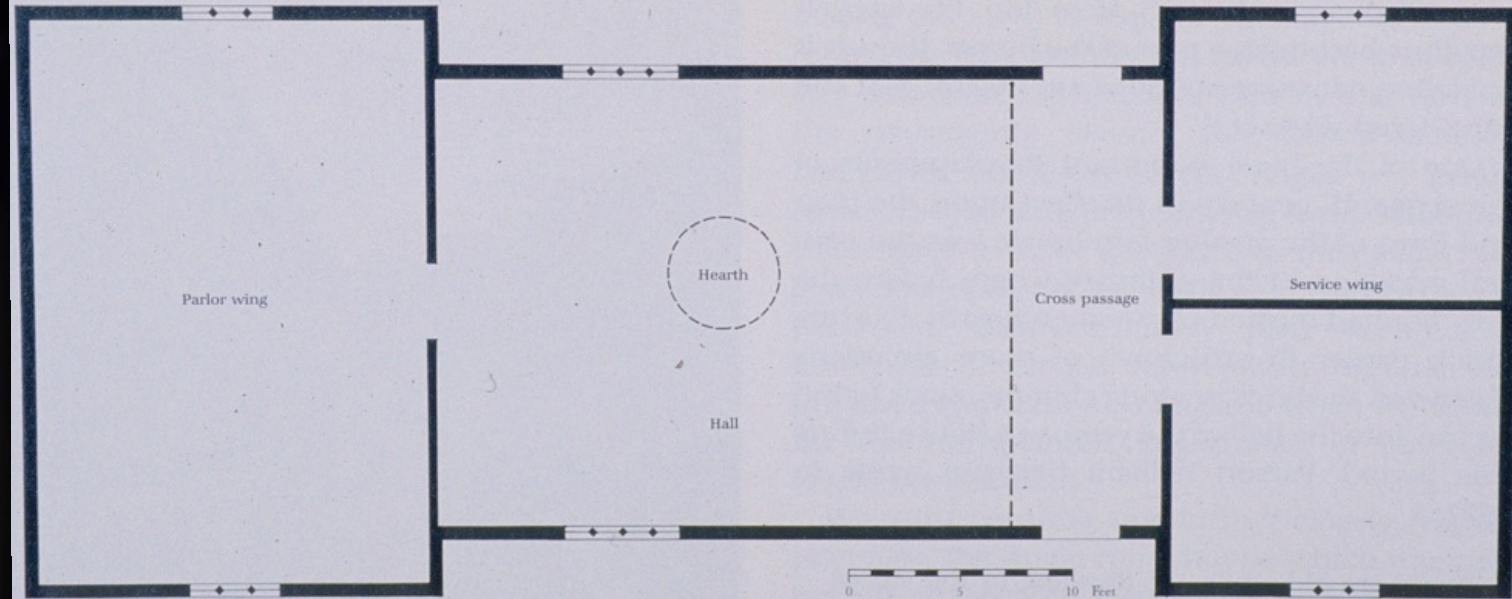
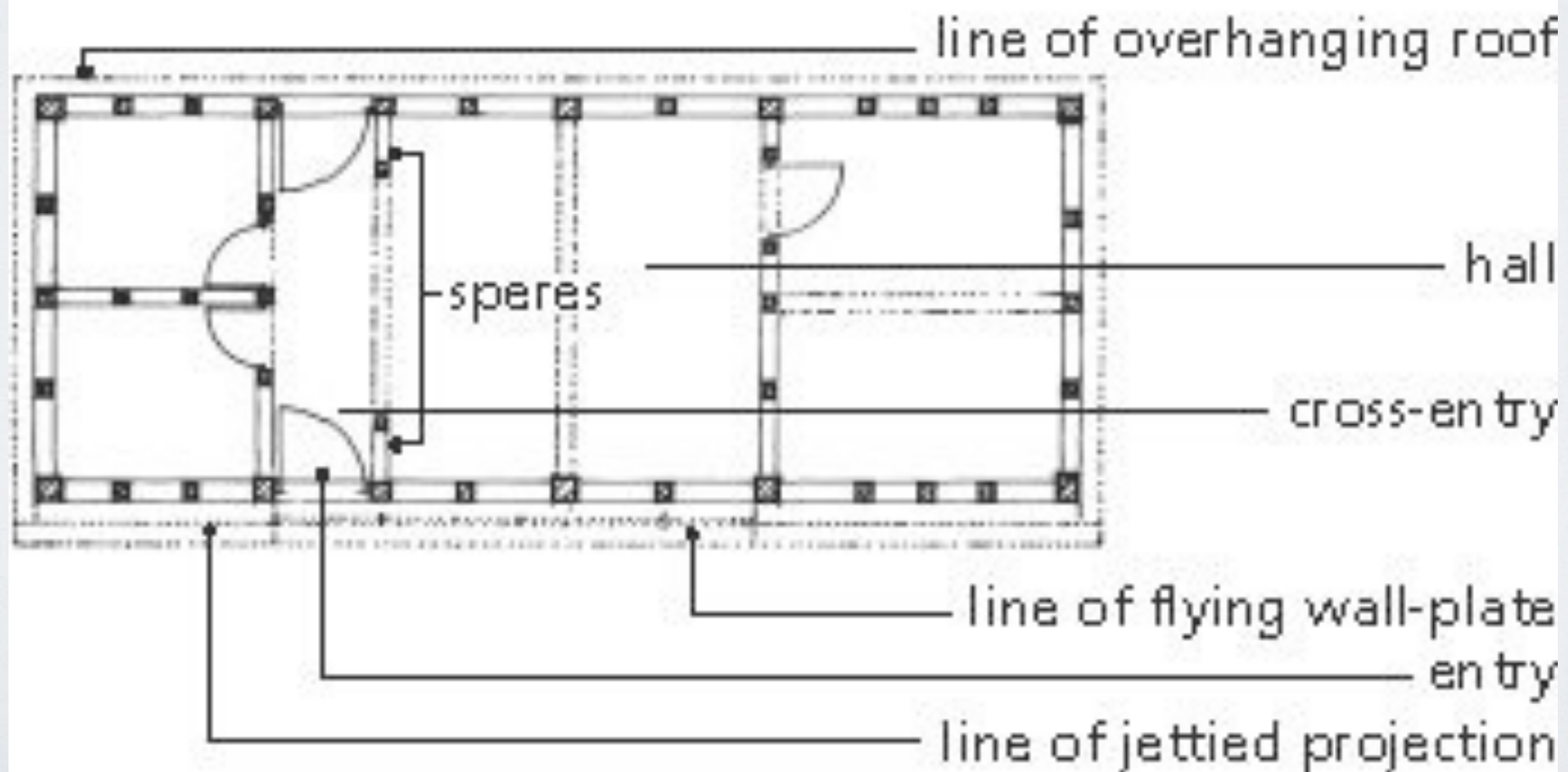
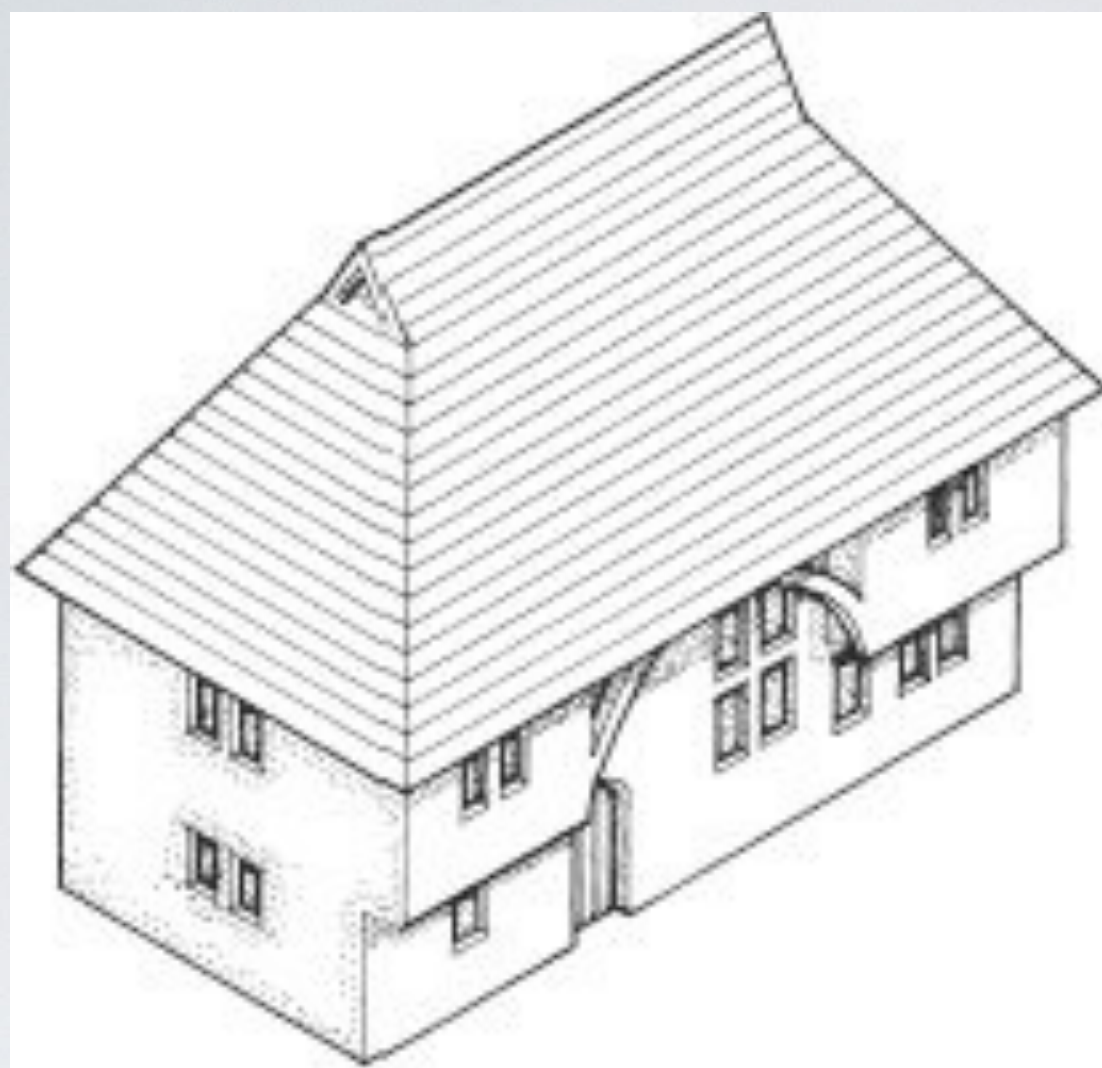


Figure 1. Ground-floor plan of characteristic early sixteenth-century East Anglian farmhouse with single-story hall block open to the roof and parlor and service wings.







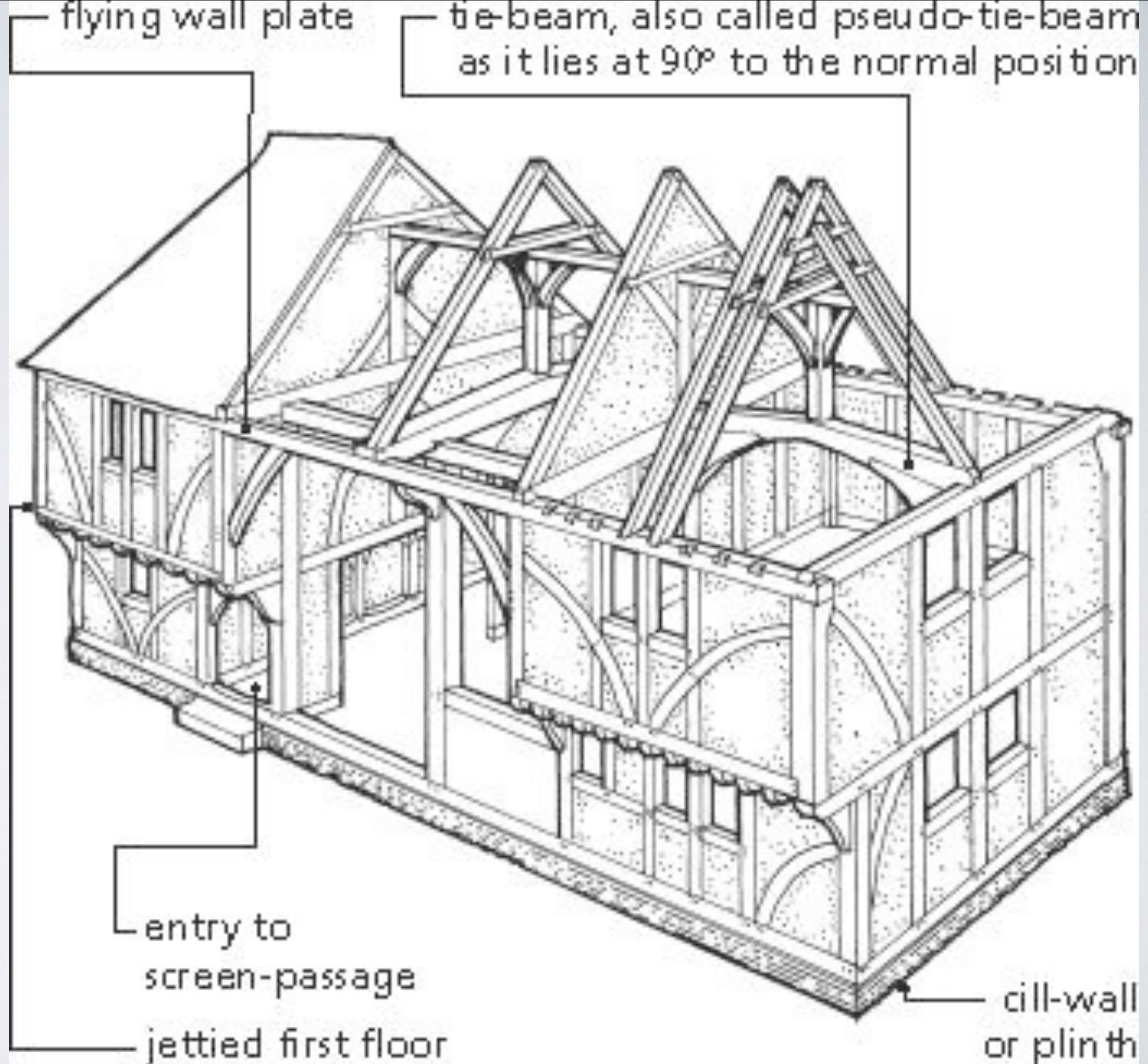


Possible origins and retention of the jetty:

1. In addition to eaves, jetty further protects post-in-hole construction

2. Efficient way to frame a 2-story house without weakening the vertical posts with too many mortise & tenon joints

3. Later, the jetty is embellished to show status due to wealth





# Mayflower Cottage Essex, England, 1620

(the form and plan is a result of the  
“Great Rebuilding”  
of rural England from c. 1570  
to c. 1640, due to enclosure)

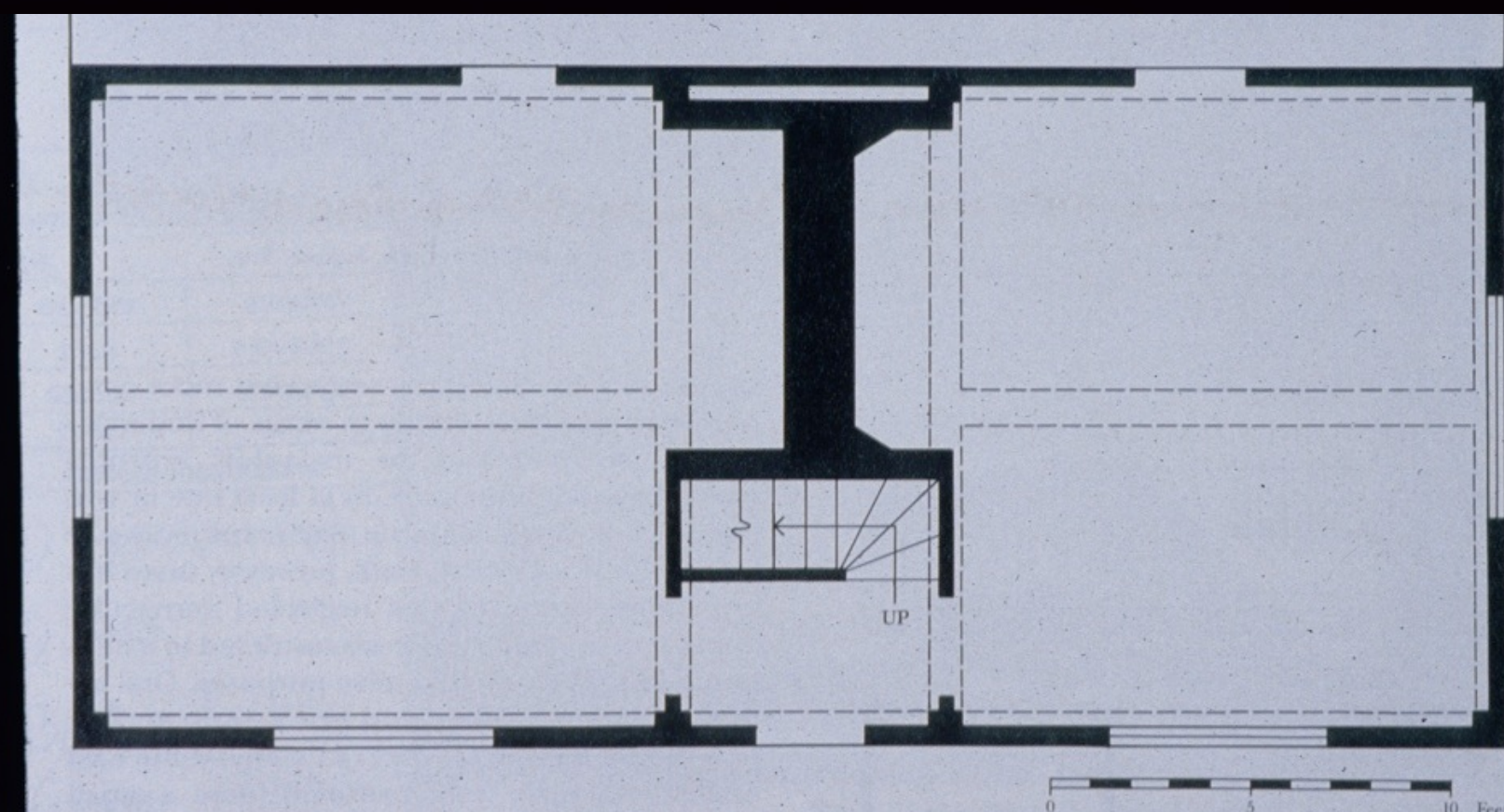
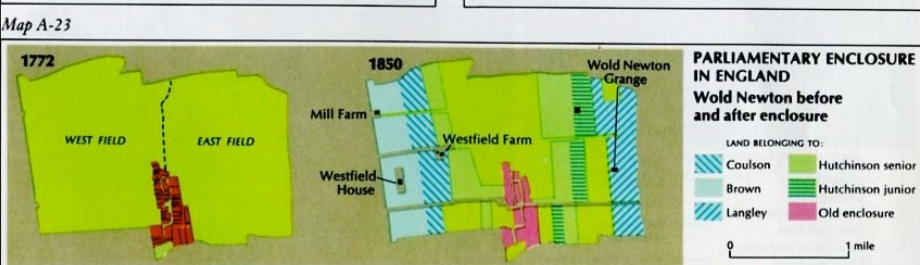
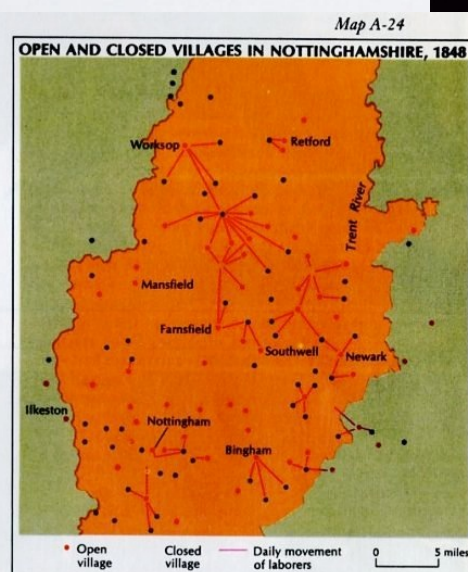
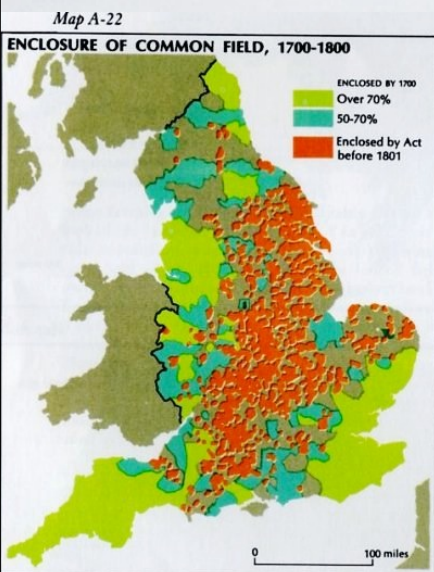
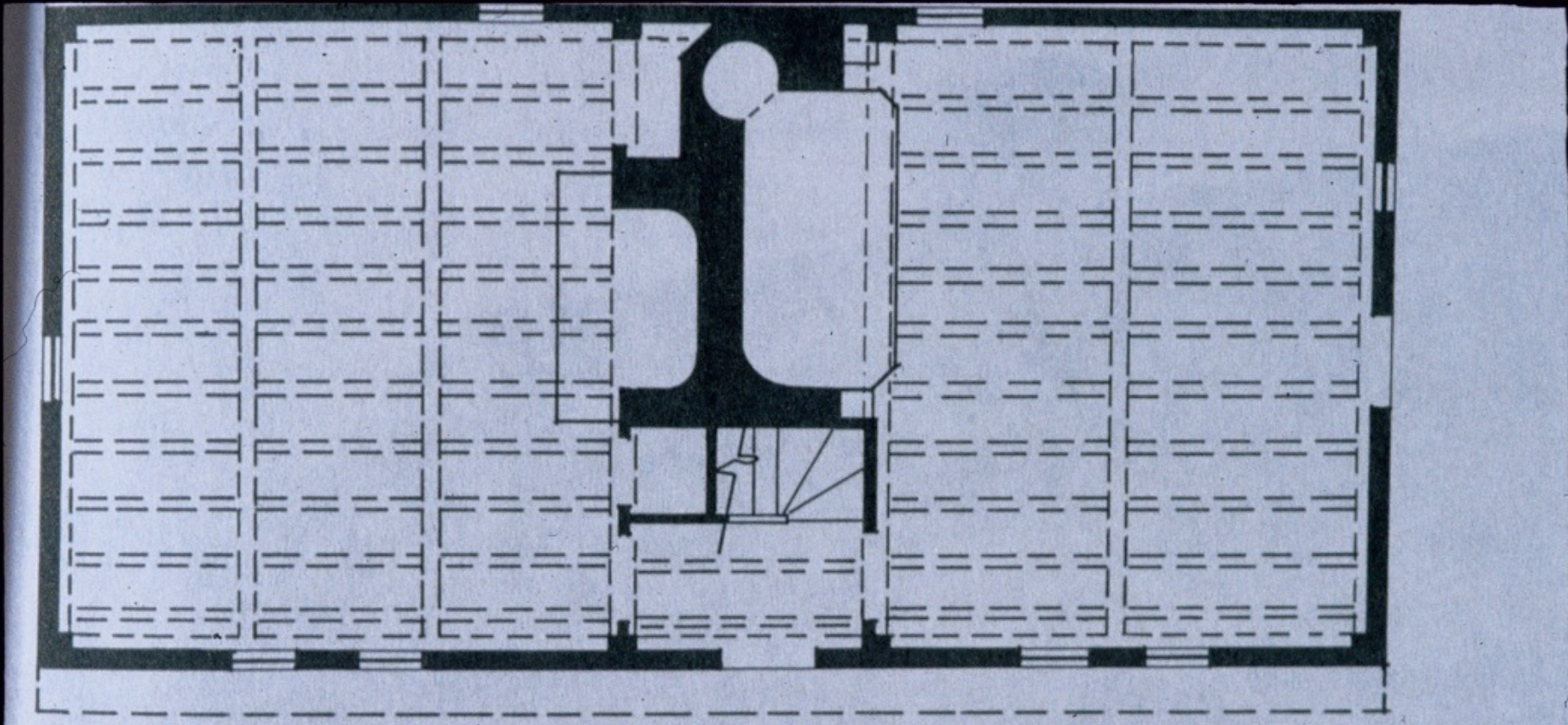
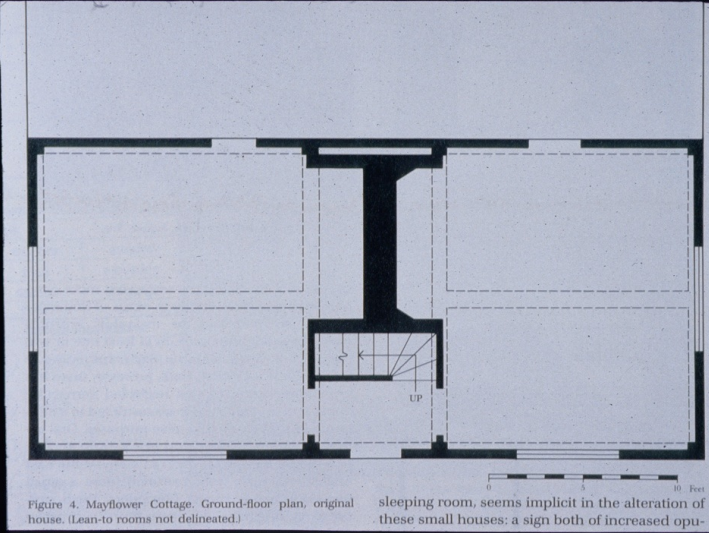


Figure 4. Mayflower Cottage. Ground-floor plan, original sleeping room, seems implicit in the alteration of

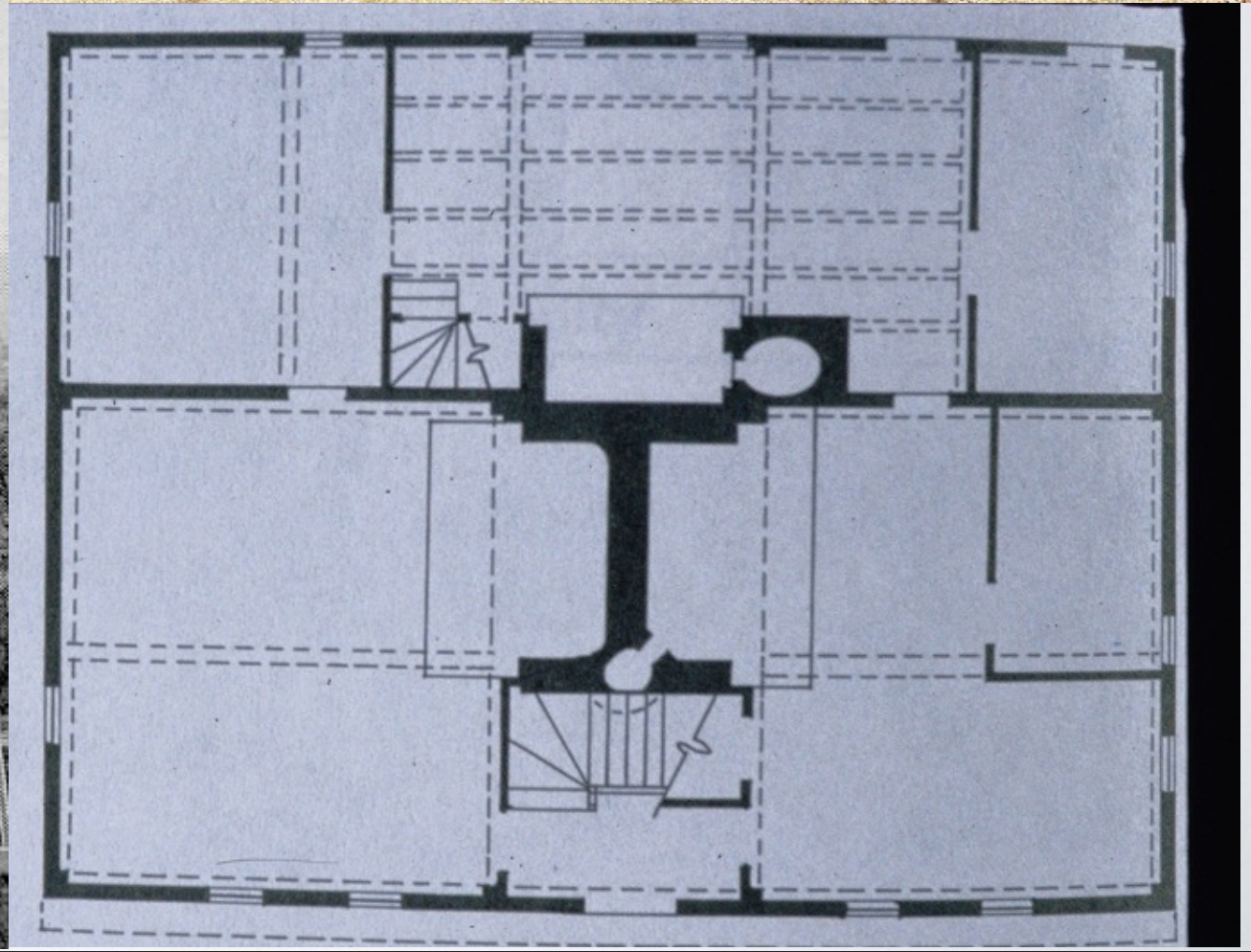


Parson Capen House  
Topsfield, MA, 1683





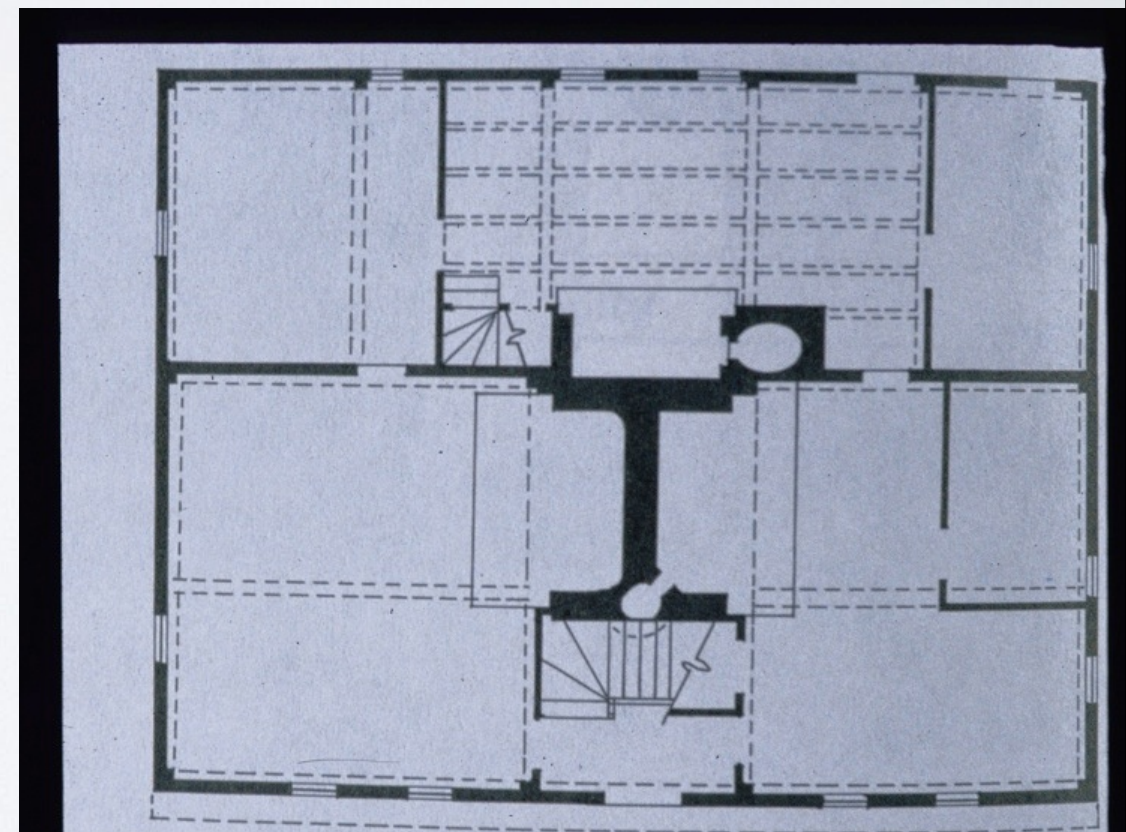
Boardman House  
Saugus, MA, 1687  
“Saltbox” (no)  
“Cat slide” (no)  
“Shed roof” (yes)



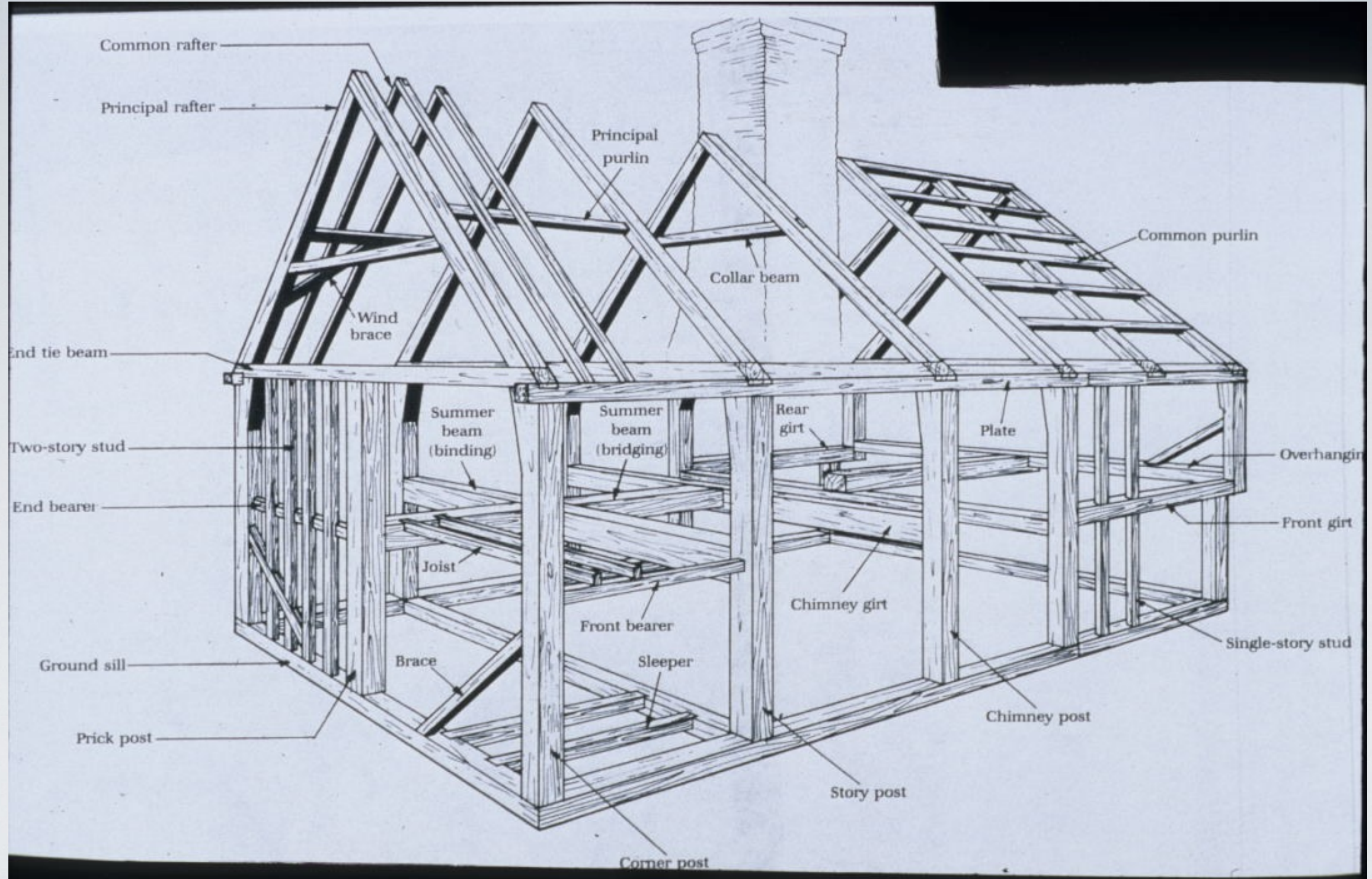




Chimney Stack  
Jetty (overhang)  
Pendant







New England Box Frame (heavy timber frame)

Rigid

Permanent





Preparing the site

Plymouth Village House

Cutting tenons on studs

Fitting studs to plate







Charring ends of posts



Raising the first bent for bay

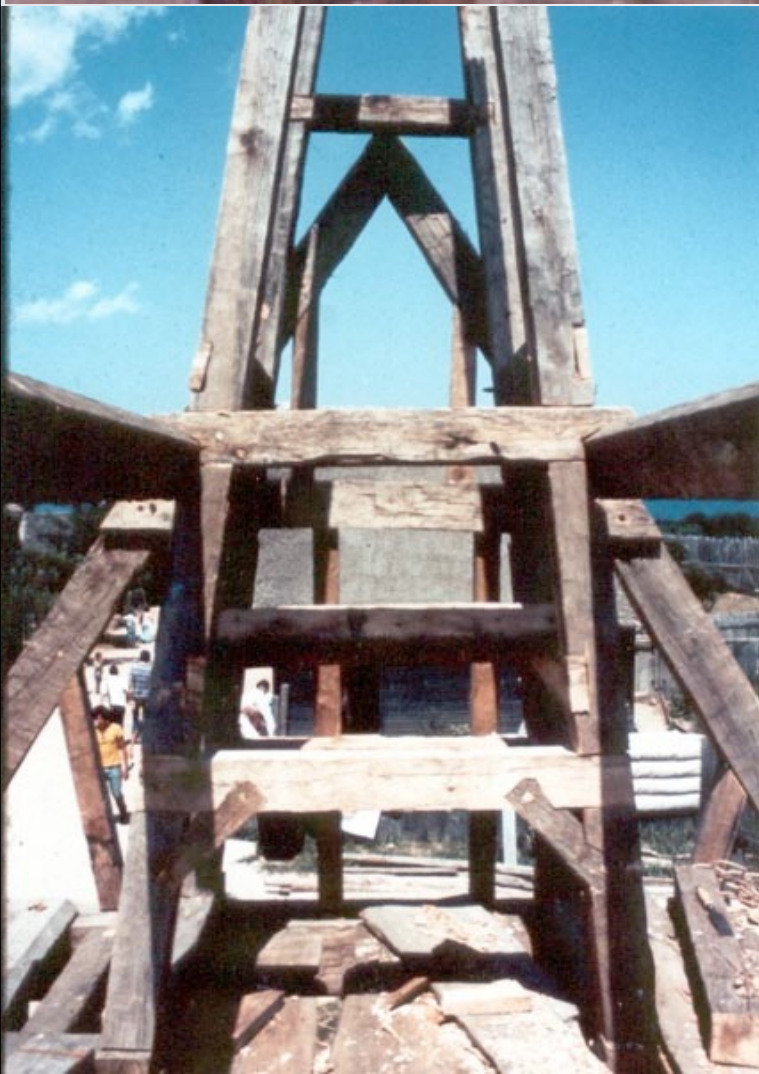


Raising second bent



Putting end girt in place





Raising first pair of principal rafters

Frame assembled

Chimney framing

Installing common rafters







**Riving clapboards**

**Smoothing clapboards**

**Attaching clapboards  
to wattle and daub  
walls**



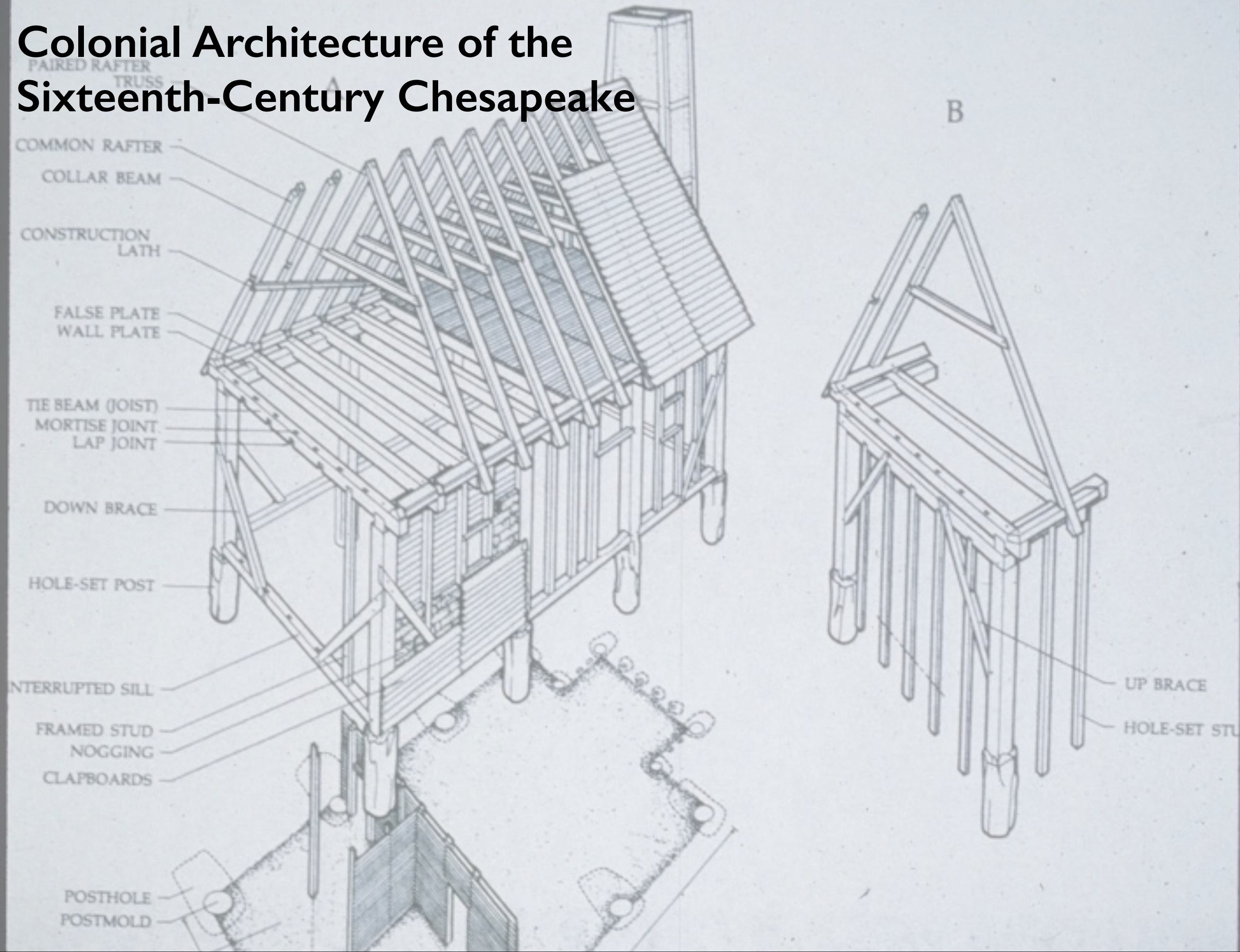




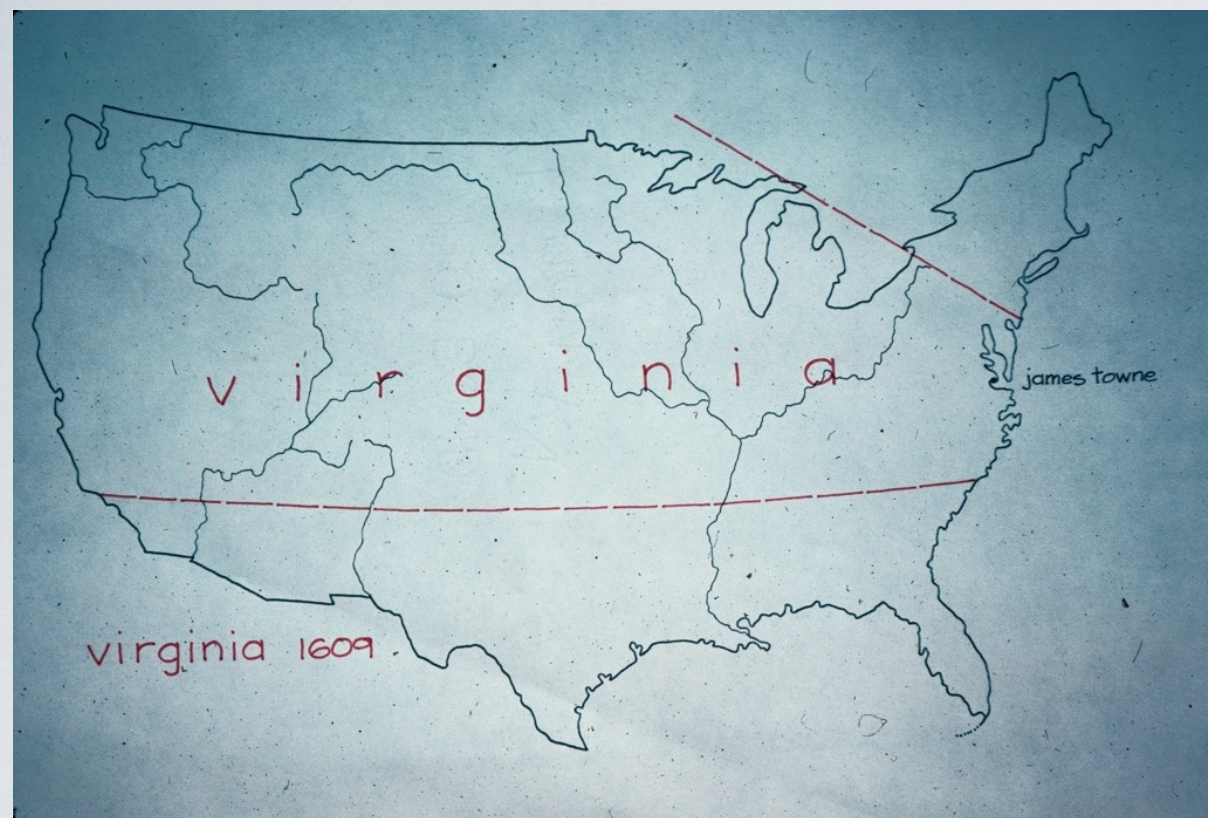
**The Command of resources**



# Colonial Architecture of the Sixteenth-Century Chesapeake





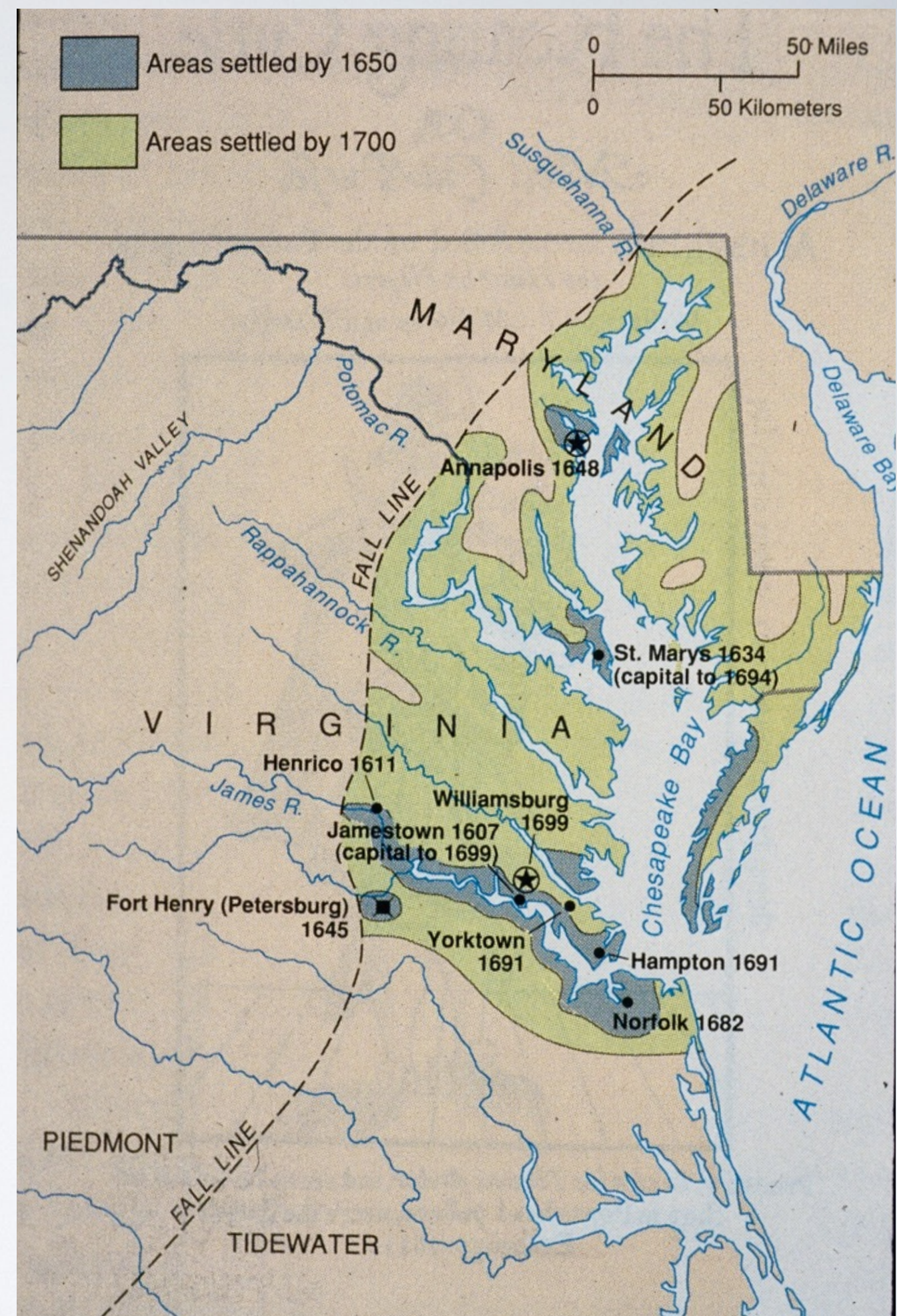


1606, Virginia Company receives charter from King James I with the purpose of establishing colonies in North America.

1607, Virginia founded; the first permanent English colony in North America.

1619, House of Burgesses established, the first democratically elected legislature in North America.

term: Tidewater Virginia





A MAP of  
the most INHABITED part of  
**VIRGINIA**  
containing the whole PROVINCE of  
**MARYLAND**  
with Part of  
PENSILVANIA, NEW JERSEY AND NORTH CAROLINA  
Drawn by  
Joshua Fry & Peter Jefferson  
in 1751.

Curratuck Inlet



Roanoke Inlet

To the Right Honourable, George Dunk Earl of Halifax, First Lord Commissioner,  
and to the Rest of the Right Honourable and Honourable Commissioners, for TRADE and PLANTATIONS.  
This Map is most humbly Inscribed to their Lordships,  
By their Lordships  
Most Obedient & most devoted humble Serv<sup>ts</sup> Tho<sup>s</sup> Jefferys.





*E English of Reighly  
In Essex N<sup>o</sup> 2*



**Tobacco**  
**Cash Crop Economy, in contrast to**  
**the family based farm economy of**  
**New England**

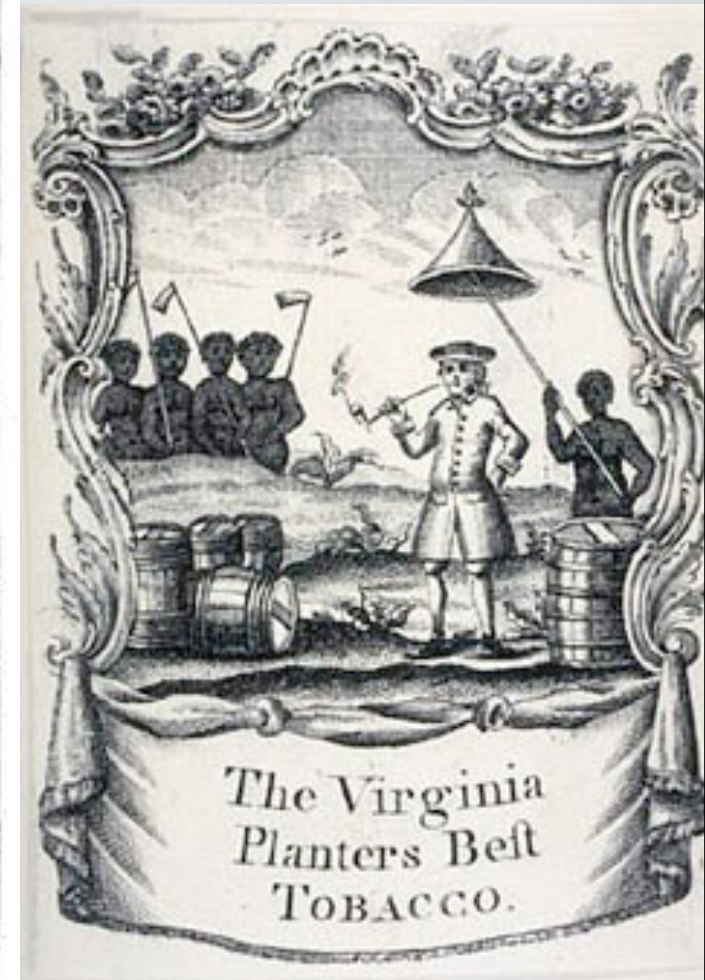
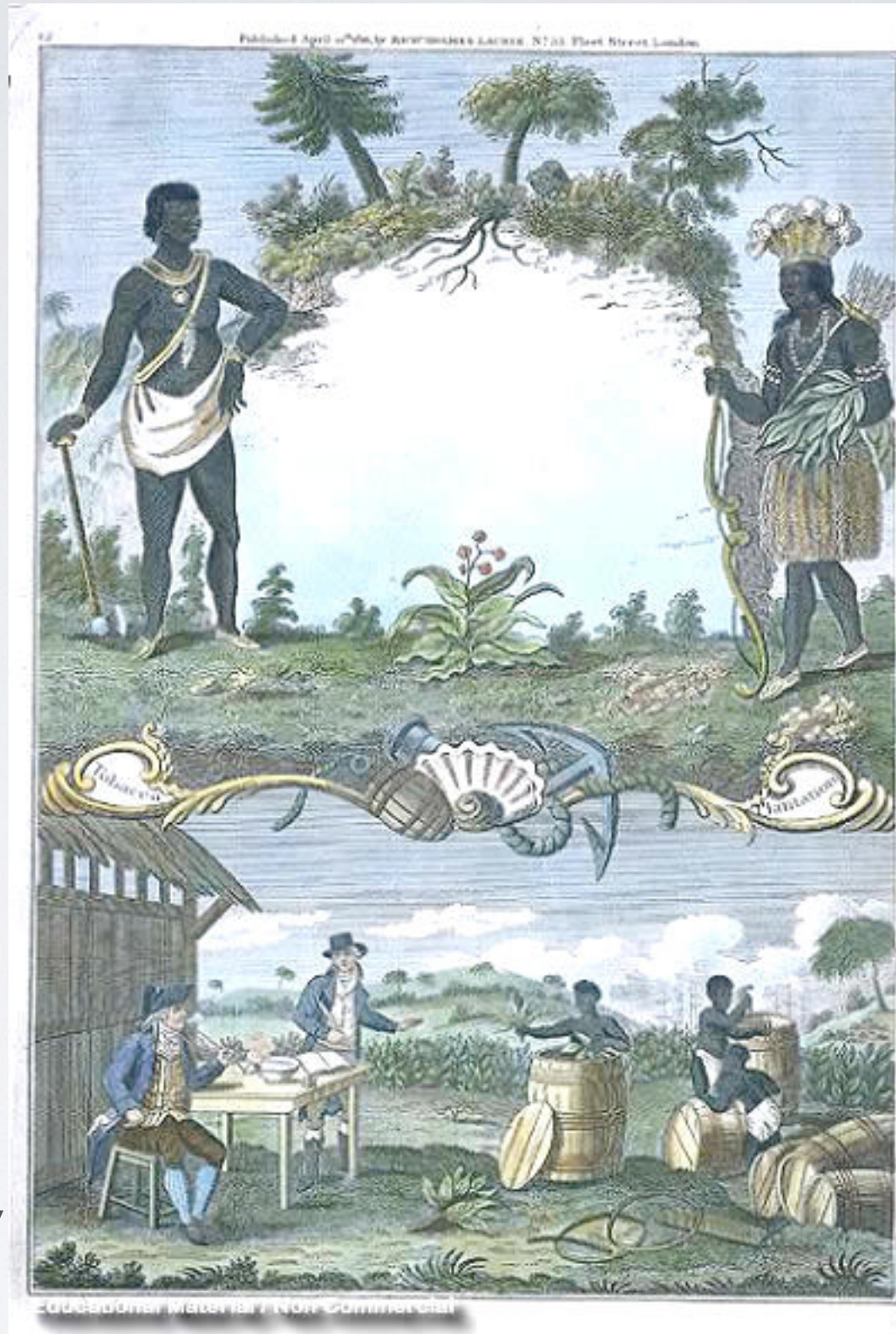


# The Slave Economy

1619, Slaves are brought to Virginia from the Caribbean and sold to tobacco planters. These were the first slaves in British North America.

1662, Virginia law decrees for the first time that children born to black women “shall be bond or free, depending on the condition of the mother.”

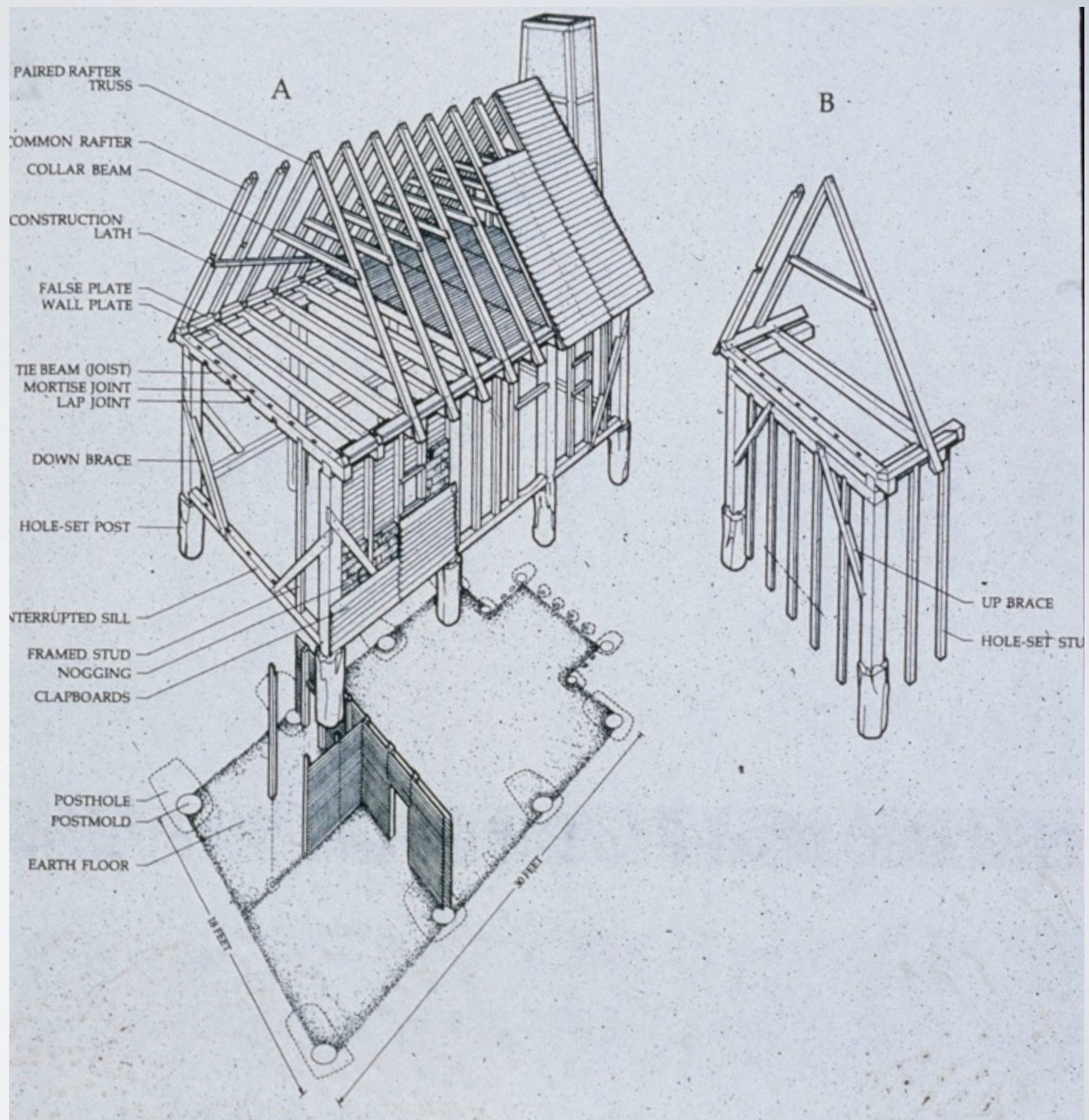
1705, Slaves are defined as property, allowing their owners to bequeath their slaves. This law codified a long-standing practice of the 16th century.





# CONSTRUCTION TECHNIQUES IN THE EARLY CHESAPEAKE

Earthfast Construction  
aka  
Post-in-ground  
Construction







**Cedar Park**  
**1702**  
**Anne Arundel Co., MD**  
**(brick veneer added 1736)**

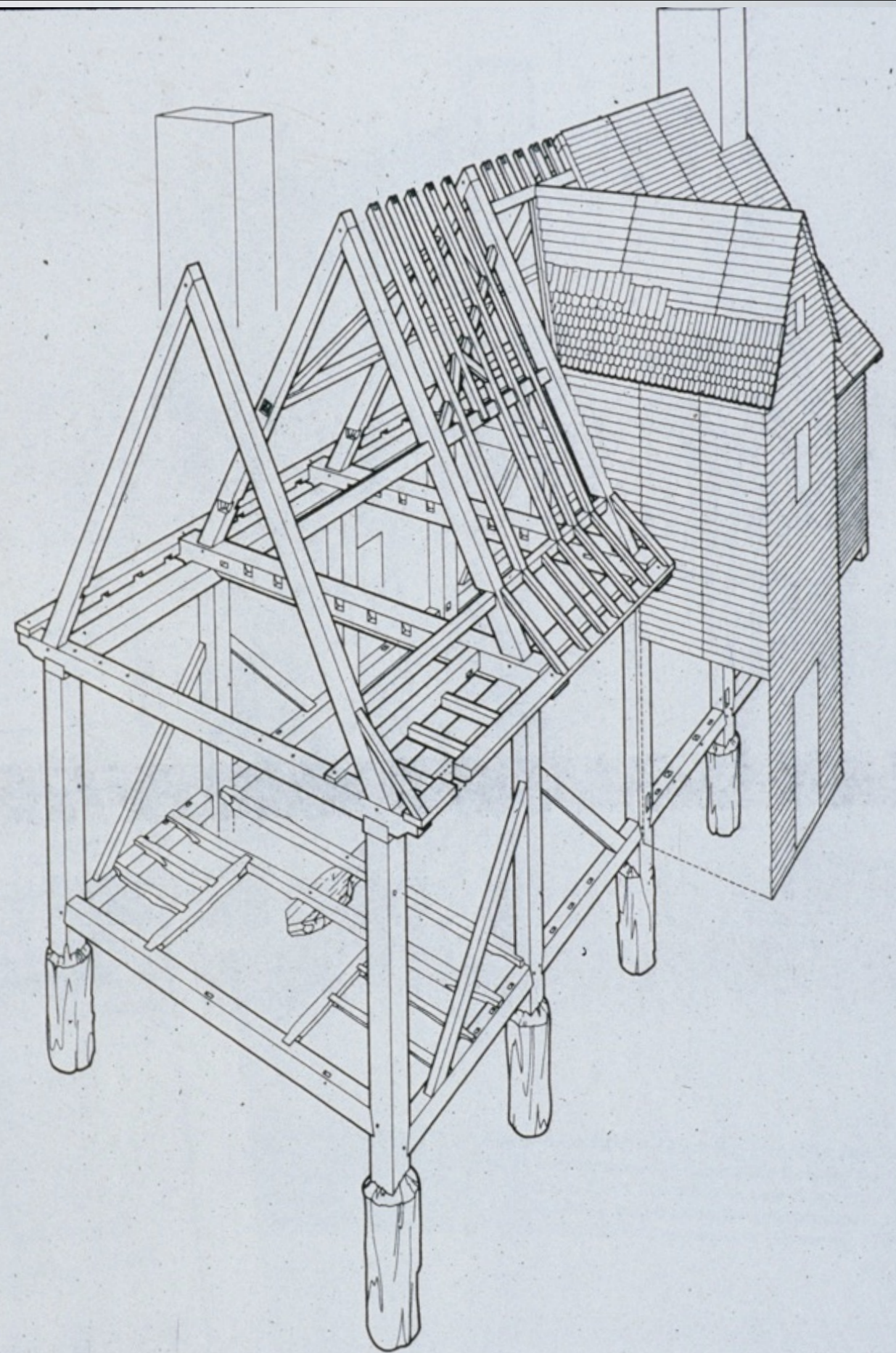


Fig. 4. Perspective view of the frame of Cedar Park, Anne Arundel County, Maryland, as built in 1702. (Drawing, Cary Carson and Chinh Hoang.)











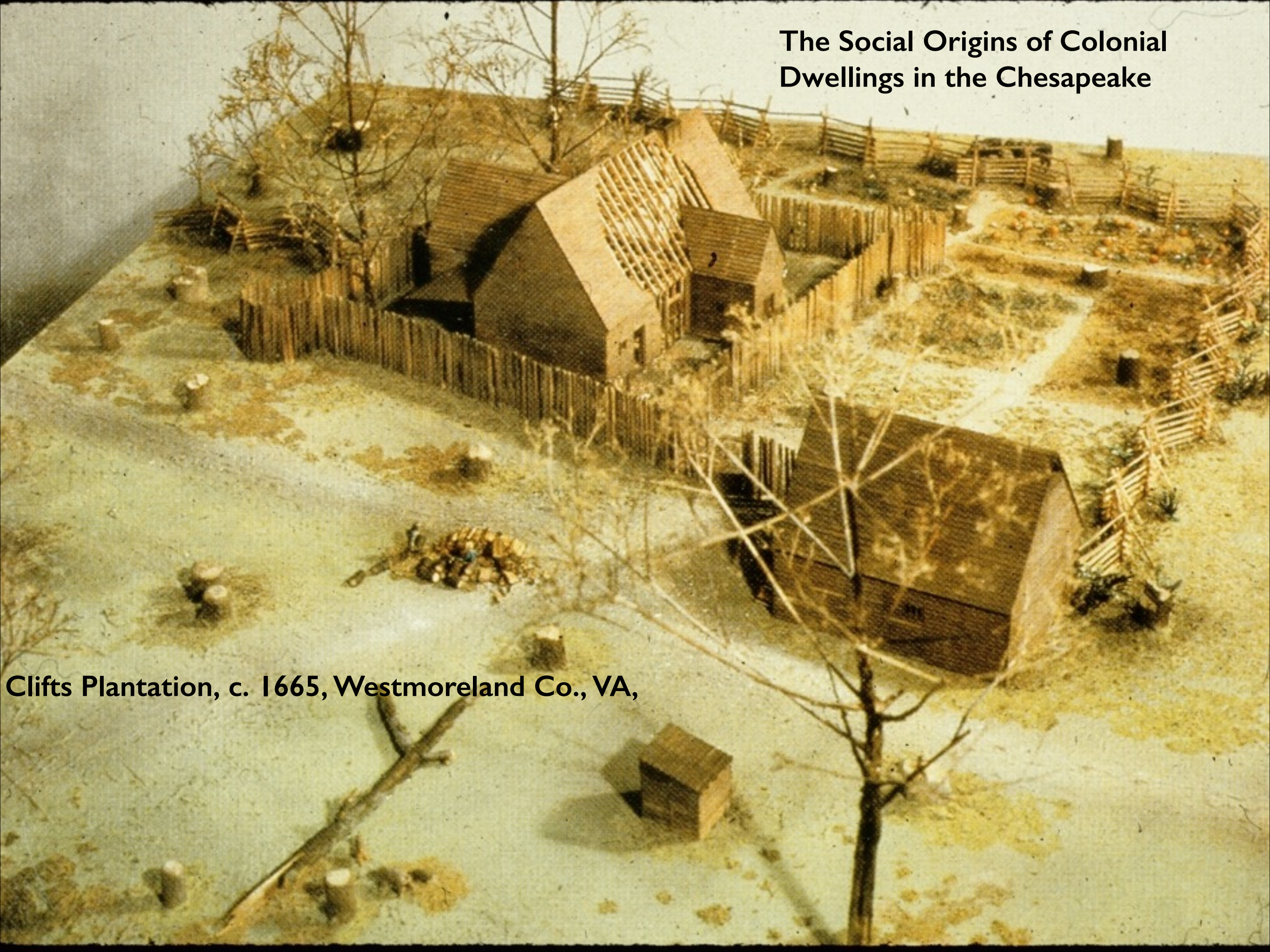






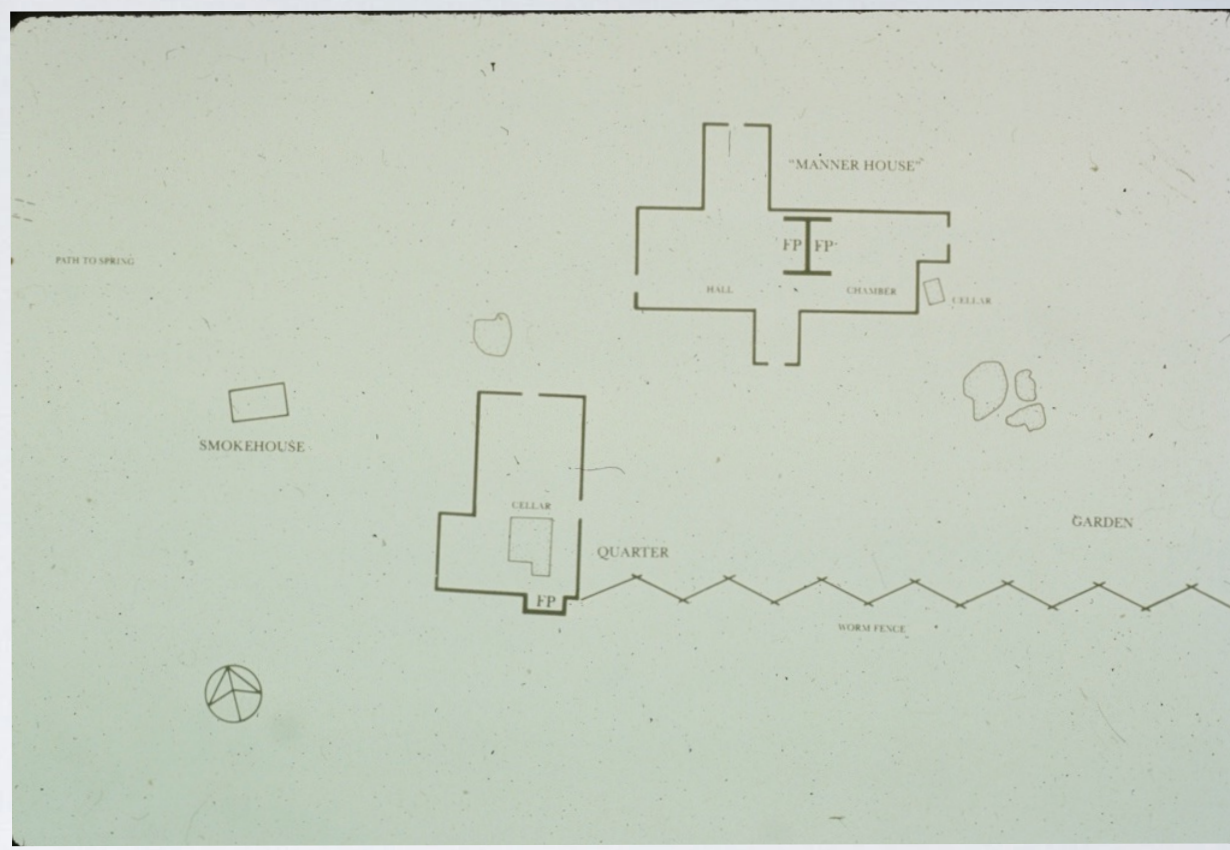


## The Social Origins of Colonial Dwellings in the Chesapeake



Clifts Plantation, c. 1665, Westmoreland Co., VA,







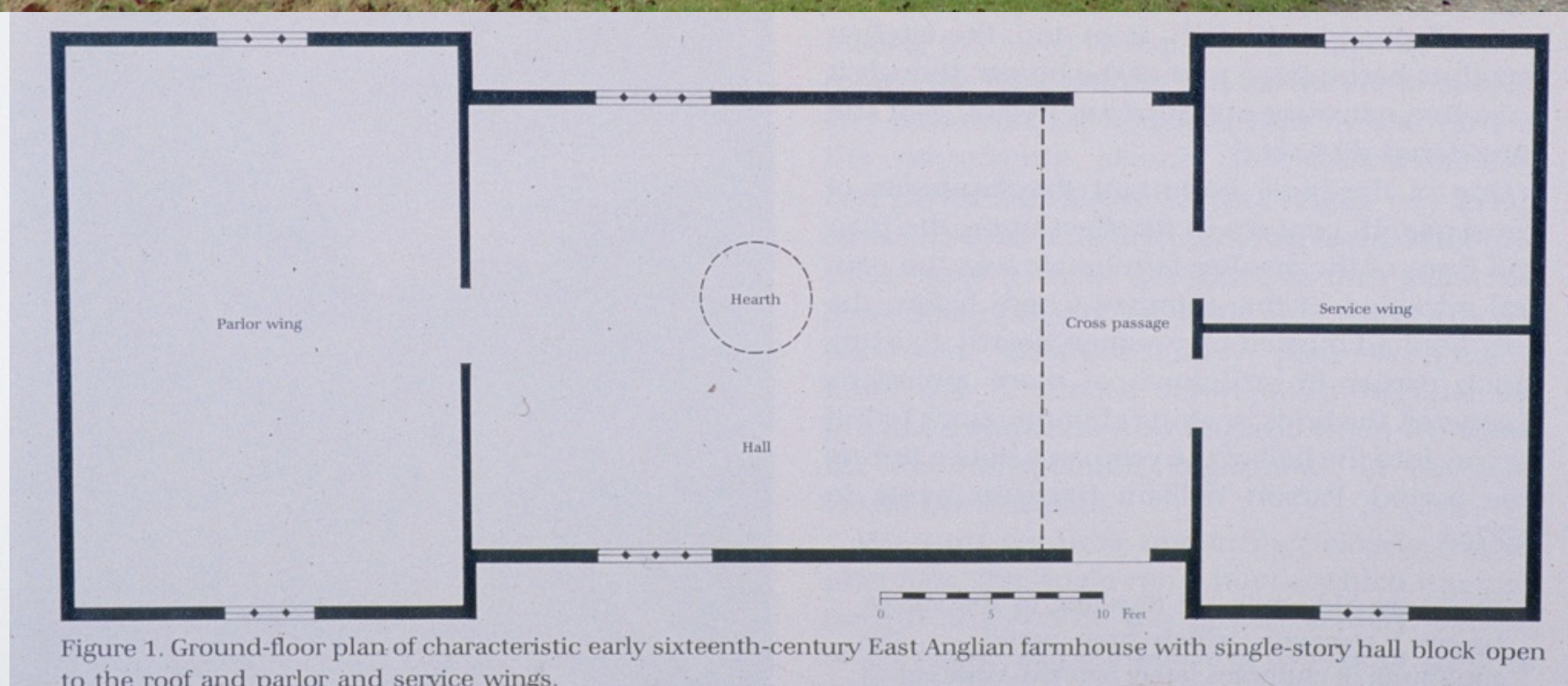
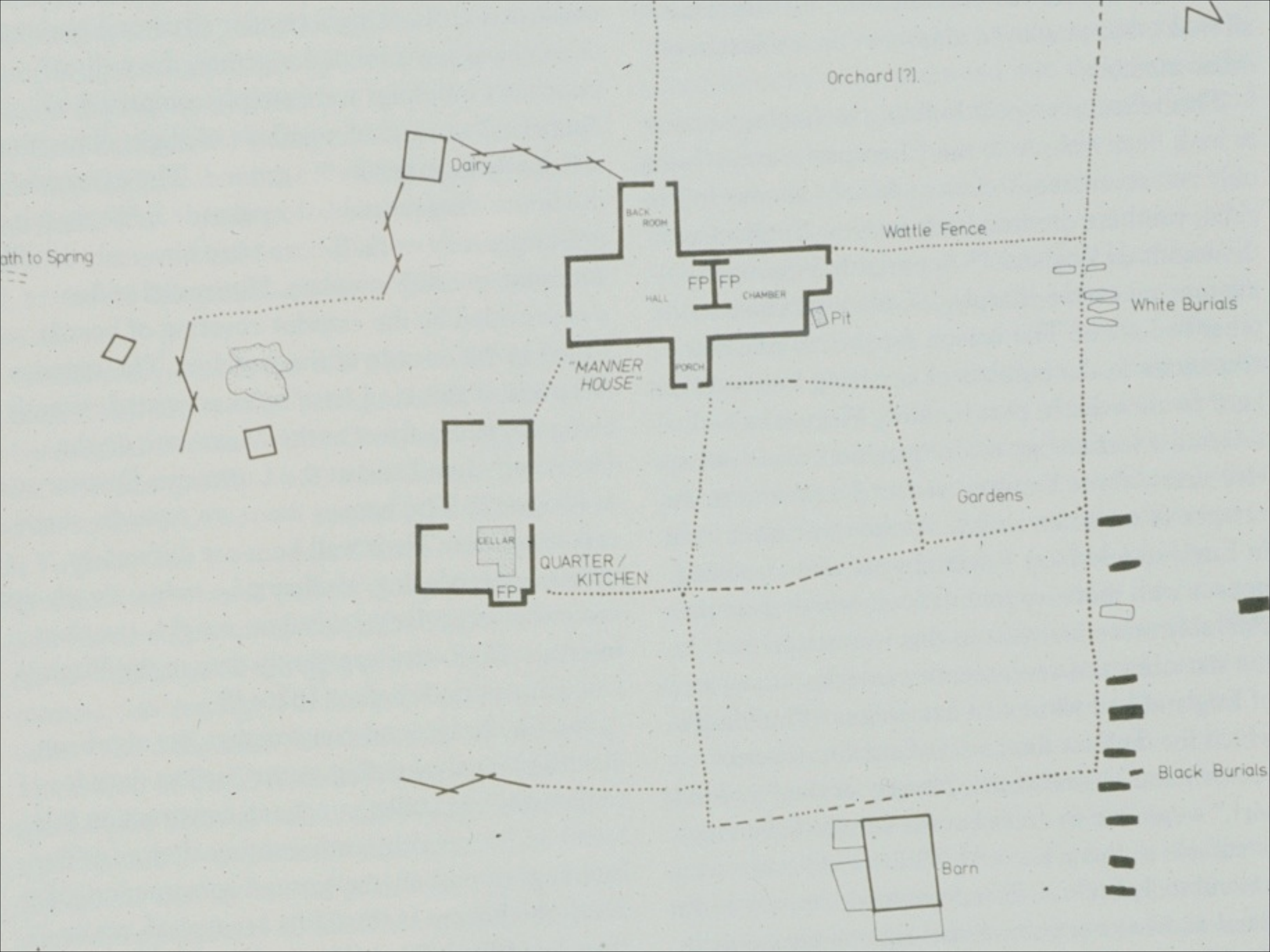
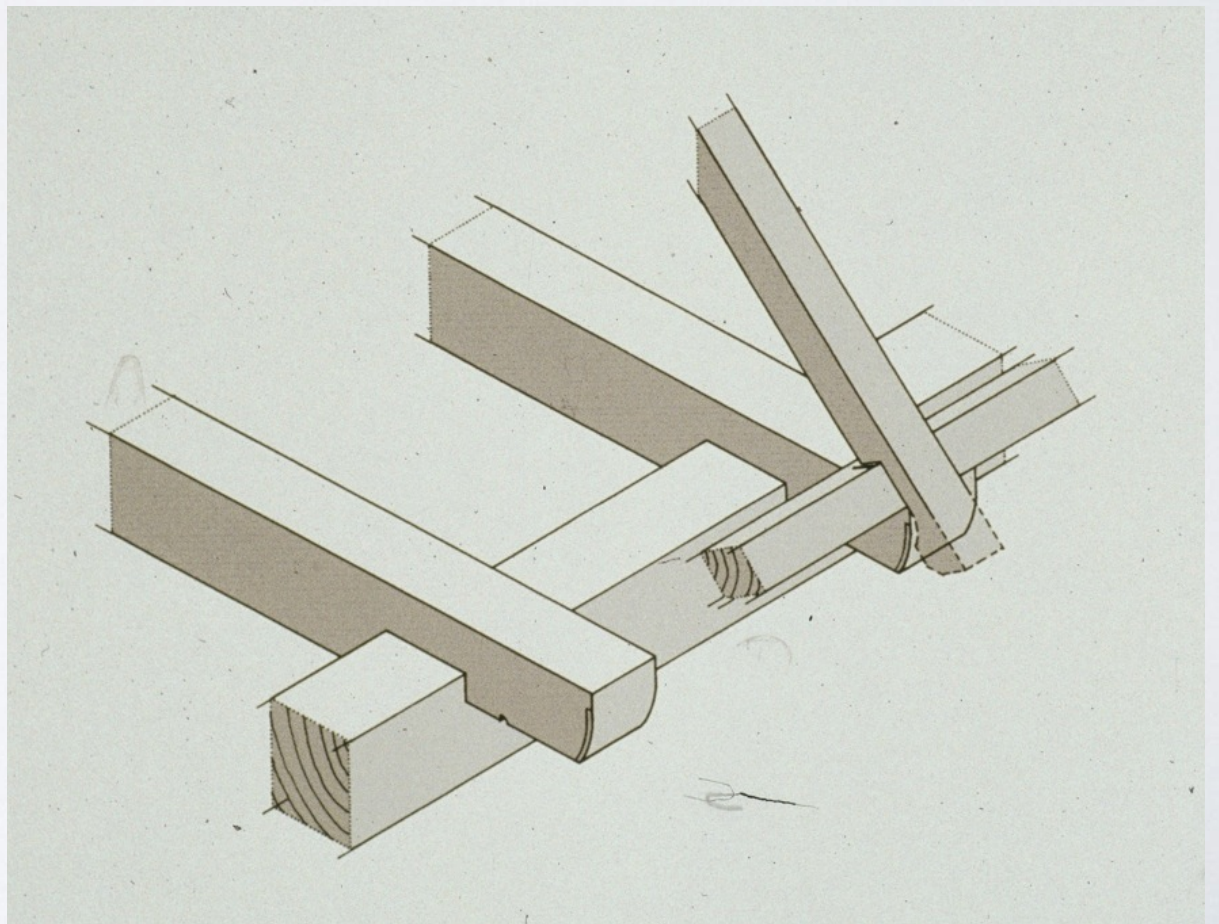
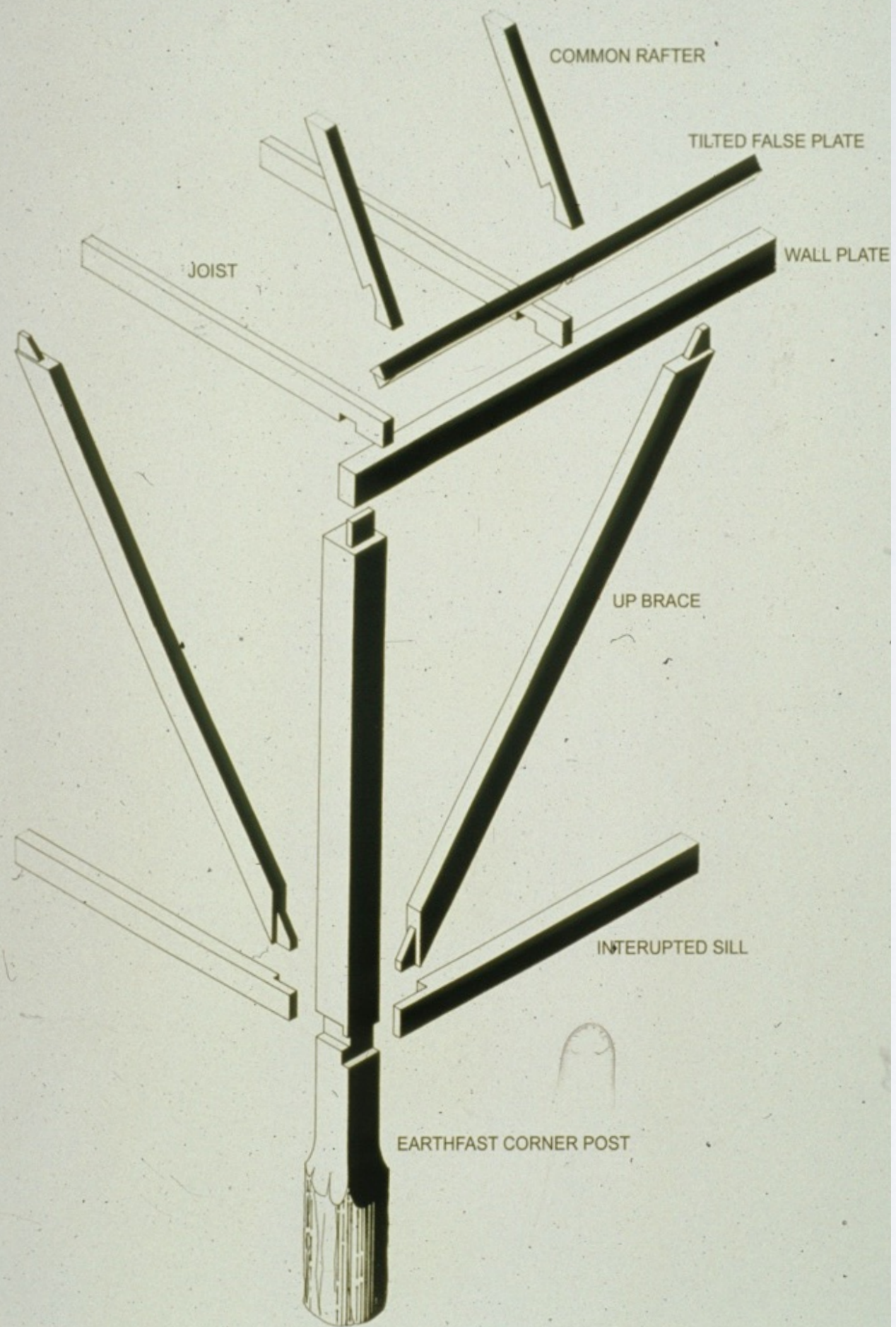


Figure 1. Ground-floor plan of characteristic early sixteenth-century East Anglian farmhouse with single-story hall block open to the roof and parlor and service wings.

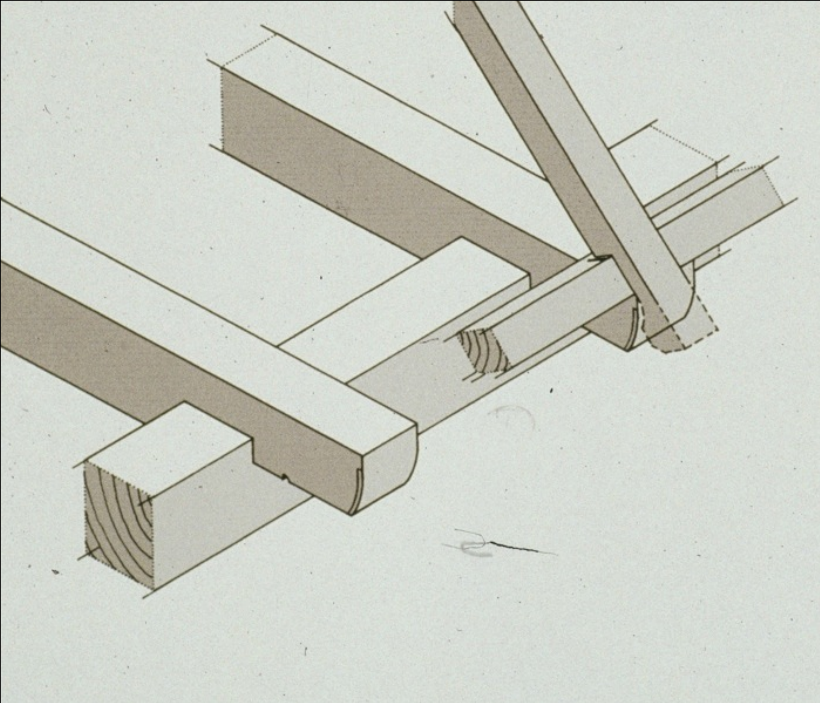






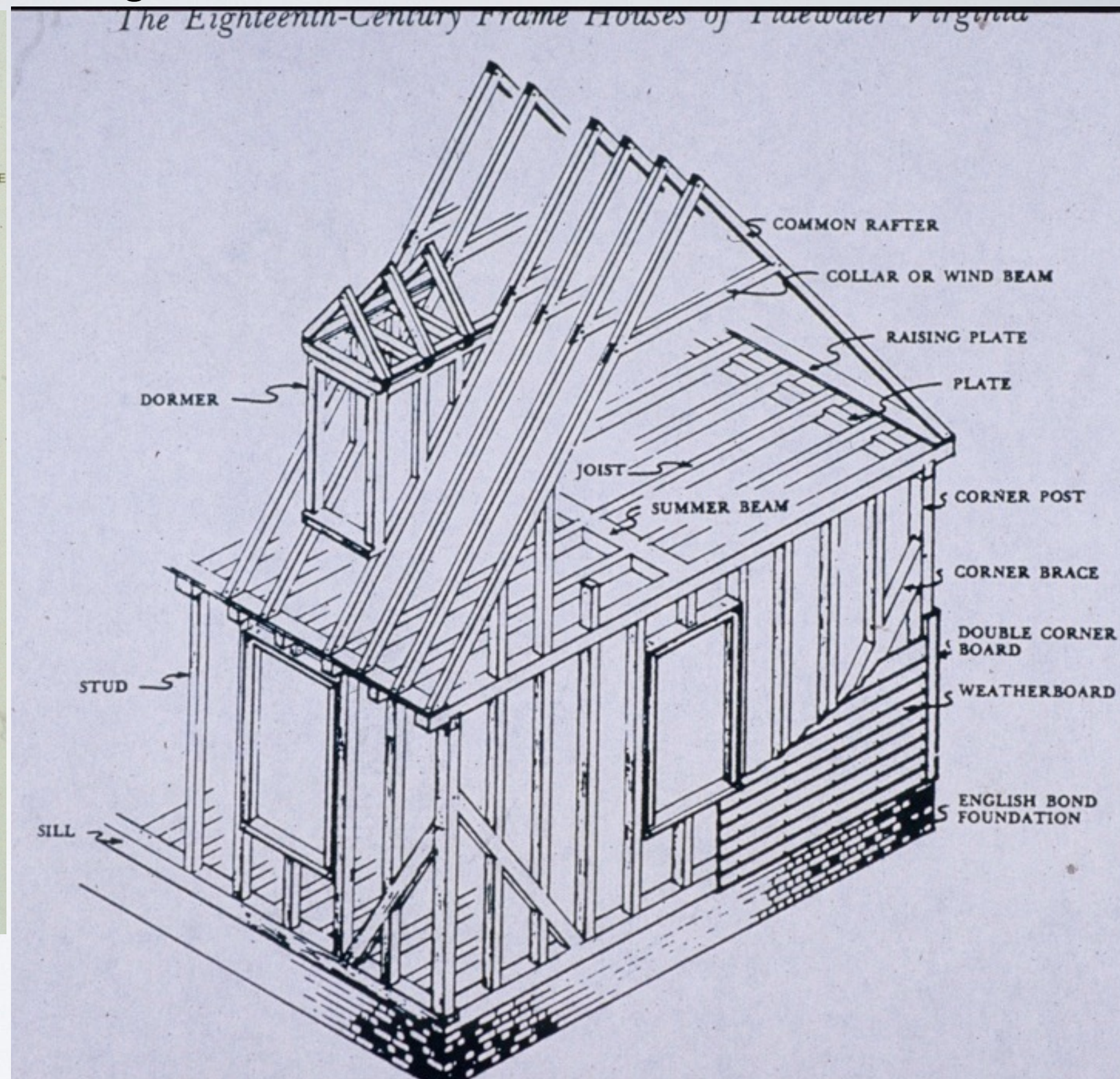
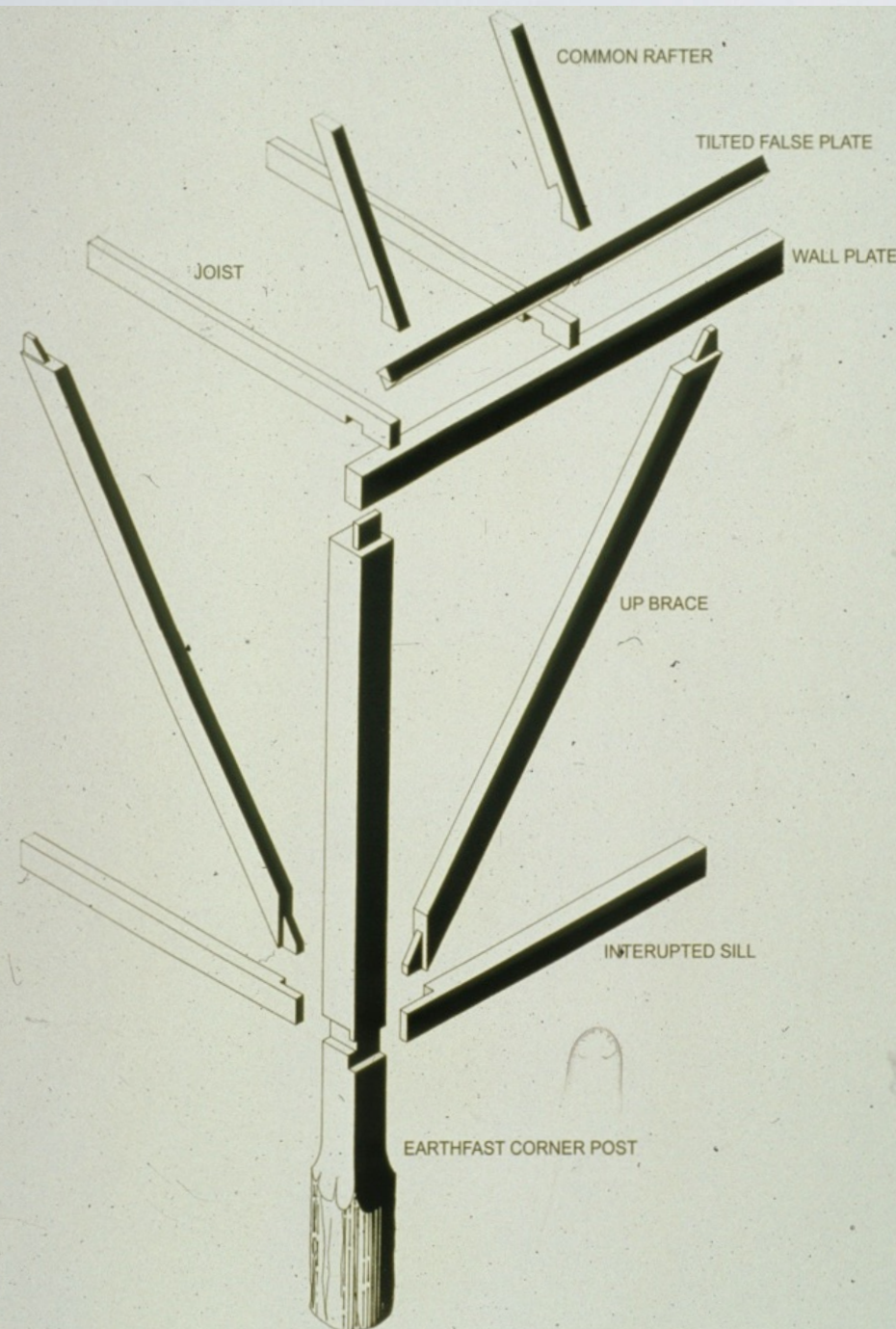




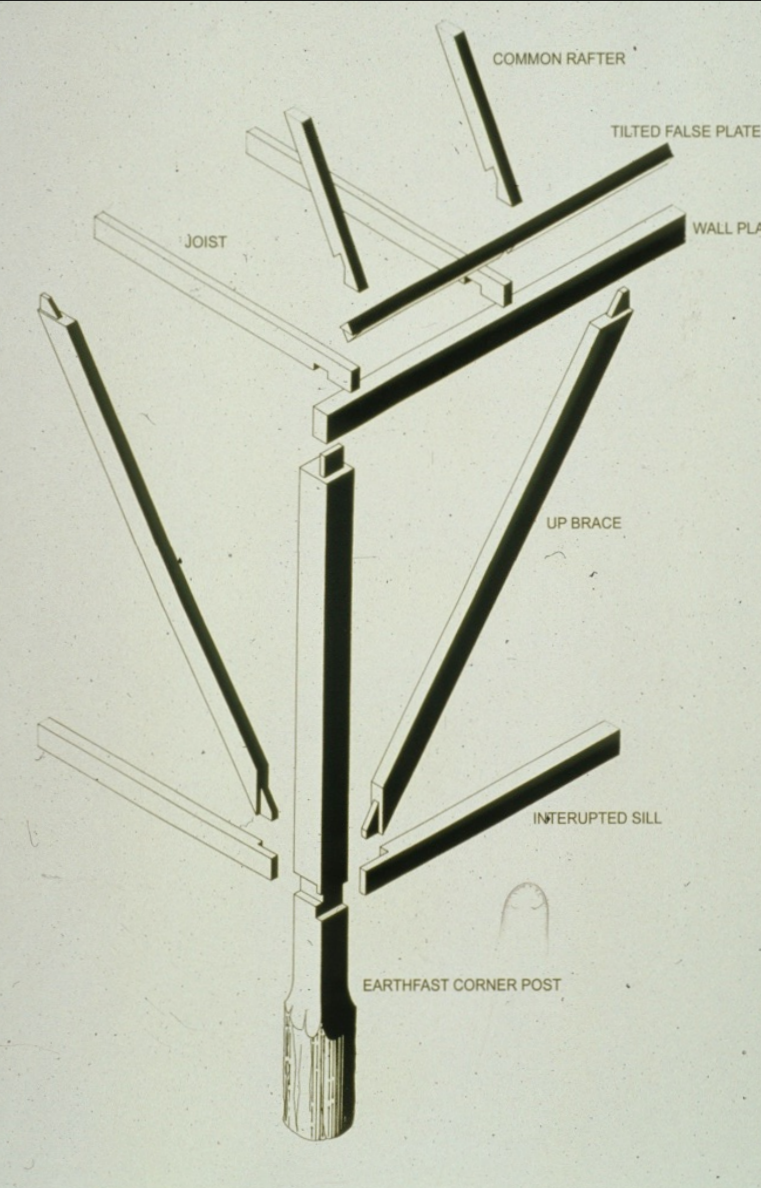




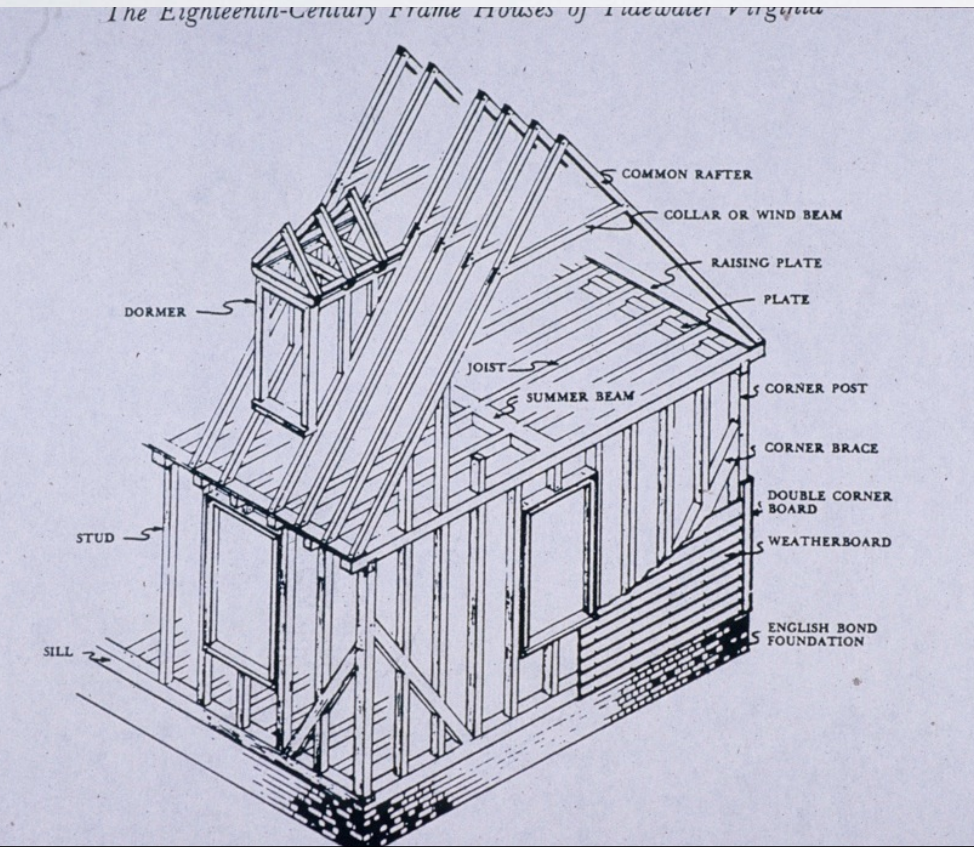
# Evolution of the Virginia House Frame







*The Eighteenth-Century Frame Houses of Tidewater Virginia*





## Why Earthfast Construction in the Chesapeake?





Married women in  
Middlesex County, Virginia

39

Married men in Middlesex

48

Women in Andover,  
Massachusetts Bay Colony

62

Men in Andover

64

Women in Plymouth Colony

62

Men in Plymouth Colony

69

